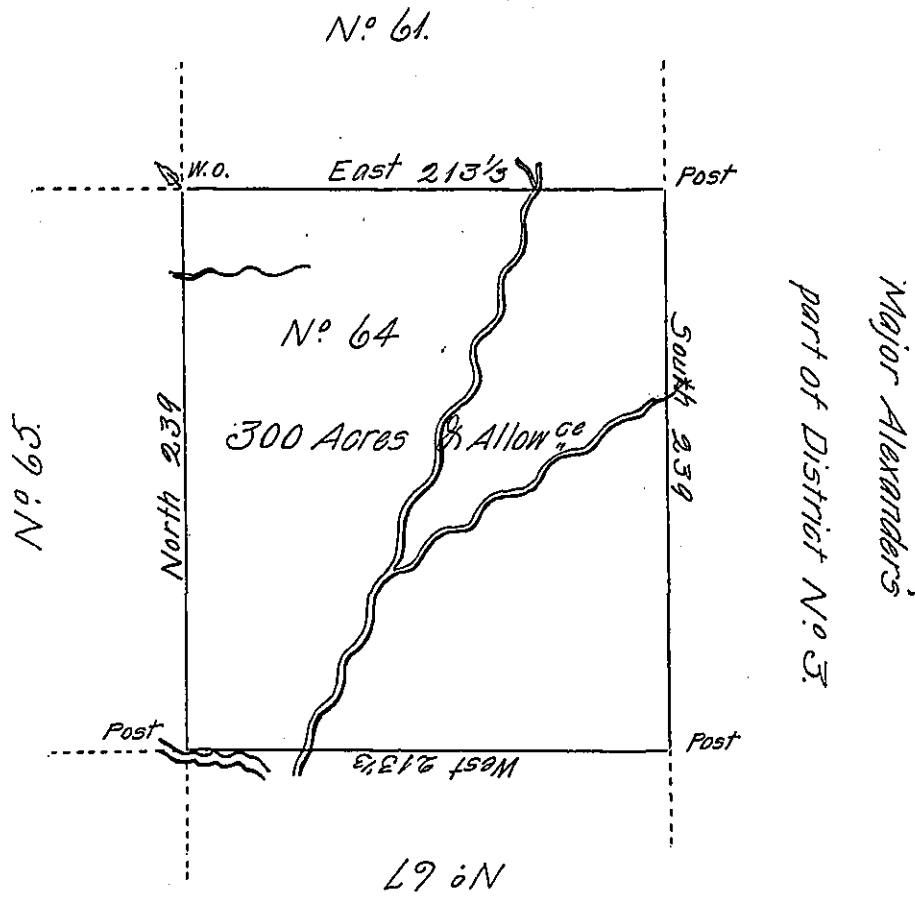


✓



Situate on the Waters of Brush Creek Between the fifteenth & Sixteenth Parallel in that Part of District Nº 3 to me Allotted on the North Side of the River Ohio Being Part of the Land Appropriated for the Redemption of the Certificates of Depreciation &c. Survey'd in June 1785 Pursuant to Instructions from Jn^o Lukens Esq^r Surveyor Gen^l dated at Philad 5th March 1785.

Nat^l Breeding D.S.

IN TESTIMONY that the above is a copy of the original remaining on file in the Department of Internal Affairs of Pennsylvania, made conformably to an Act of Assembly approved the 16th day of February, 1833, I have hereunto set my Hand and caused the Seal of said Department to be affixed at Harrisburg, this twenty second day of November 1905.

Leaac B. Brown
 Secretary of Internal Affairs.